

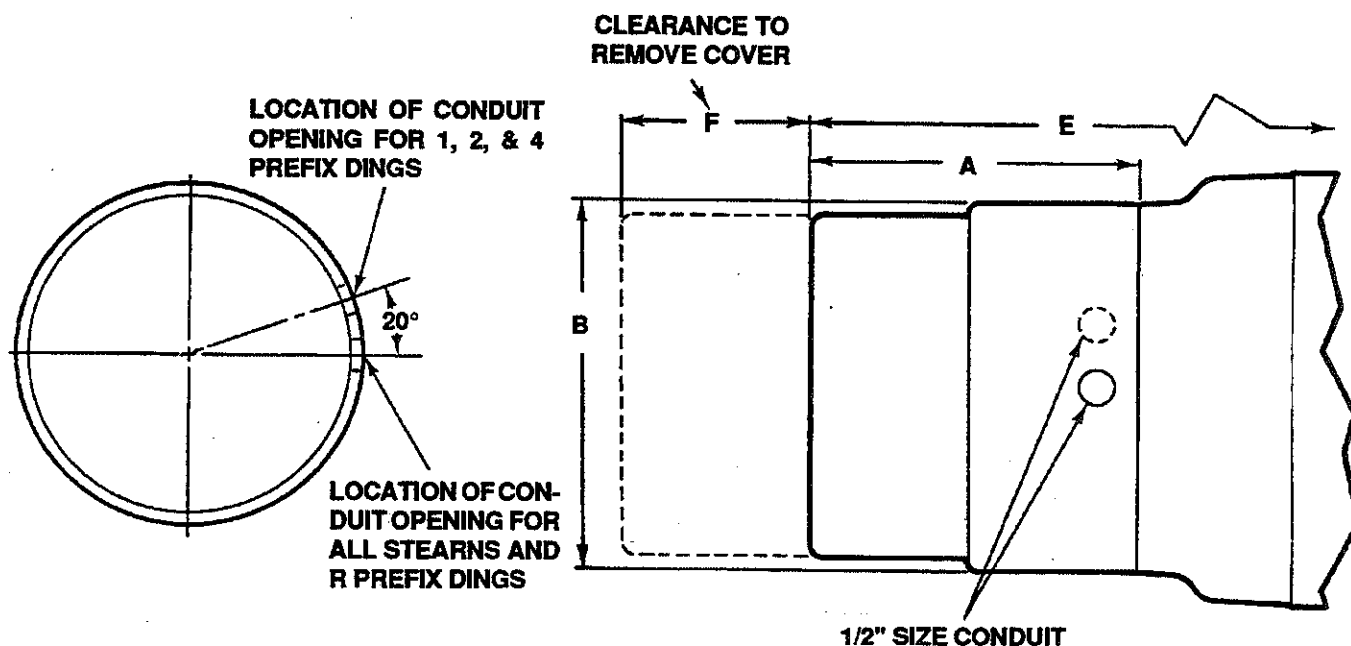
# SHUR - STOP BRAKE KITS

## MOUNTED ON TOTALLY ENCLOSED MOTORS

### FRAMES 143T THUR 215T

### TYPES UT, UTF, UTQ

SECTION: 205U  
 PAGE: 16  
 EFFECTIVE: 03-01-91  
 SUPERSEDES: PG 17  
 DATED: 07-29-84



ALL DIMENSIONS ARE IN INCHES

FRAME	TORQUE (LBS. FT.)	DINGS						STEARNS				
		BRAKE MODEL NO.	A	B	E	F		BRAKE MODEL NO.	A	B	E	F
143T	3	1-61003-25	4-1/4	6-9/16	4-11/16	0		1-055-331	4-1/2	6-9/16	4-15/16	2-15/16
143T, 145T	6	1-62006-25	4-1/4	6-9/16	4-11/16	0		1-055-332	4-1/2	6-9/16	4-15/16	2-15/16
182T, 184T	10	2-62010-24	4-1/4	6-13/16	5-1/4	3-1/8		1-055-344	4-1/2	6-9/16	5-1/2	2-15/16
182T	15	2-63015-24	4-5/8	6-13/16	5-5/8	3-1/8		1-055-345	4-1/2	6-9/16	5-1/2	2-15/16
213T	15	R-71015	6	9	7-3/8	4		1-087-021	7-3/8	9-3/8	8-3/4	4-11/16
213T, 215T	25	R-72025	6-5/8	9	8	4		1-087-031	7-3/8	9-3/8	8-3/4	4-11/16
215T	35	R-72035	6-5/8	9	8	4		1-087-041	7-3/8	9-3/8	8-3/4	4-11/16

Dimension "A" is measured from register face of brake to end, including release lever or screw fasteners.

Brake enclosures ( housings) are open type.

The conduit opening is illustrated in the standard position and will be supplied in this position unless otherwise specified on order.

Optional locations are:

Dings - conduit opening may be located in steps of 90°.

Stearns - conduit opening may be located on opposite side.

Dimension "E" represents the additional length of the unit with brake mounted. To obtain the overall length of the unit with brake mounted, add dimension "E" from this print to the overall length dimension shown on print of the unit on which brake is to be mounted.



**U. S. ELECTRICAL MOTORS**  
 DIVISION OF EMERSON ELECTRIC CO.



DO NOT USE FOR CONSTRUCTION  
 PURPOSES UNLESS CERTIFIED