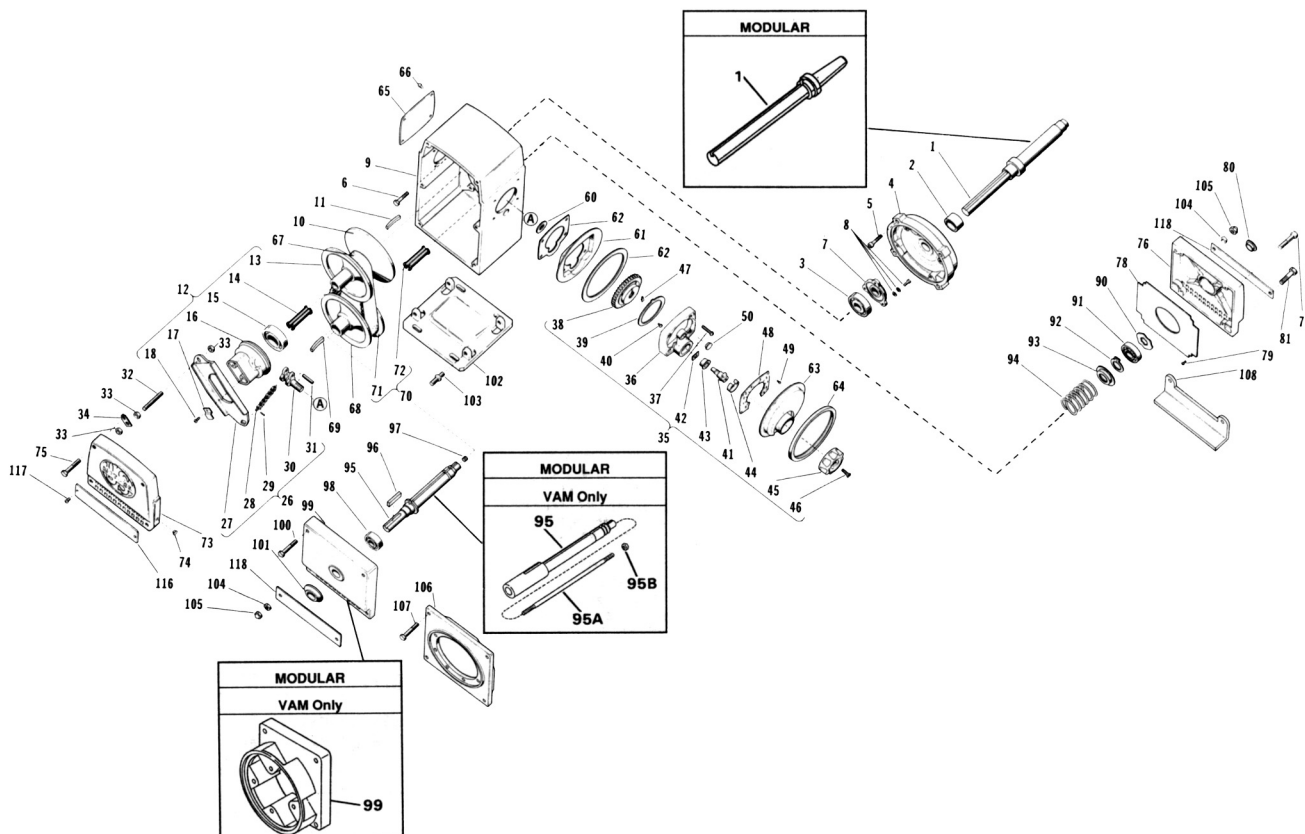


# RENEWAL PARTS



# PARTS LIST

## FRAME 6 — TYPES VA, VAV, VAP, VAM — VARIDRIVE FRAME ASSEMBLY



ITEM	QTY.	DESCRIPTION
1	1	Motor Shaft or Input Shaft •
2	1	Spacer (Used on MTF Only)
3	1	Ball Bearing (Position #10)(Not Used on MTF) (Refer to section 775)
4	1	Bracket, Adaptor (Used on EF & LF Only)
5	4	Socket Head Cap Screw (Adaptor Bracket to Stator)(Used on EF & LF Only)
6	4	Hex Head Cap Screws (Adaptor Bracket to Frame Case)(Used on EF & LF Only)
7	1	Bearing Cap (Used on EF & LF Only)
8	3	Hex Head Cap Screws / Plain & Lockwasher (Used on EF & LF Only)
9	1	Frame Case Assembly
10	1	Stationary Motor VARIDISC •
11	1	Bowed Key
12	1	Adjustable Motor VARIDISC Assembly (Includes Items 13 thru 18) •
13	1	Adjustable Motor VARIDISC (Sold as Assembly Only)
14	1	Bushing •
15	1	Ball Bearing (Position #9) (Refer to section 775)
16	1	Shifting Bearing Housing
17	1	Shifting Stop Lever
18	1	Self Tapping Screw
19-25	-	Not Used in This Assembly
26	1	Control Arm Assembly (Includes Items 27-31)
27	1	Shifting Lever
28	1	Roller Chain
29	1	Spring Pin - Chain/Lever
30	1	Cam Shaft
31	1	Spring Pin - Chain/Cam
32	1	Stud
33	3	Hex Jam Nut
34	1	Stud, Support
35	1	Handwheel Assembly (Includes Items 36-46)
36	1	Control Housing Assembly
37	4	Round Head Machine Screw
38	1	Control Gear
39	1	Speed Stop
40	3	Round Head Machine Screw

• Specify type of  
Varidrive construction:  
Endolube or V-Key.

### PRICES:

Parts stocking distributors: refer to your USEM renewal parts numerical index.

All others: refer to your nearest USEM parts stocking distributor.



# RENEWAL PARTS



# PARTS LIST

## FRAME 6 — TYPES VA, VAV, VAP, VAM — VARIDRIVE FRAME ASSEMBLY

ITEM	QTY.	DESCRIPTION
41	1	Pinion Shaft Assembly
42	1	Snap Ring Retaining
43	1	Bushing, Pinion Shaft
44	1	Anti-Creep Spring
45	1	Knob
46	1	Flat Head Cap Screw
47	1	Pointer
48	1	Dial Face
49	4	Self Tapping Screw
50	1	Plastic Plug
51-59	-	Not Used This Assembly
60	1	Spacer (CORRO-DUTY & Super Clean Only)
61	1	Protective Cover - Bottom (CORRO-DUTY & Super Clean Only)
62	1	Gasket - Combination (CORRO-DUTY & Super Clean Only)
63	1	Protective Cover, Top (CORRO-DUTY & Super Clean Only)
64	1	Seal - Protective Cover
65	1	Plate Cover
66	4	Round Head Screws
67	1	VARIBELT (Refer to section 732, page 1)
68	1	Stationary Driven VARIDISC●
69	1	Bowed Key
70	1	Adjustable Driven VARIDISC Assembly (Includes Items #71 & 72)●
71	1	Adjustable Driven VARIDISC (Sold as Assembly Only)
72	1	Bushing●
73	1	Front Plate Cover
74	2	Plastic Plugs (CORRO-DUTY & Super Clean)
75	2	Hex Head Cap Screw
76	1	Support Bracket (Super Clean & CORRO-DUTY)
77	2	Hex Head Cap Screw
78	1	Air Deflector (Used on VA and Units w/SYNCRGGEAR in "C" Flow Only)
79	4	Self Tapping Screws (Used on VA and Units w/SYNCRGGEAR in "C" Flow Only)
80	1	Plastic Plug
81	2	Hex Head Cap Screw w/Washers (VAV Only)
82-89	-	Not Used This Assembly
90	1	Finger Spring Washer
91	1	Ball Bearing (Position #8) (Refer to section 775)
92	1	Snap Ring Retaining
93	1	Spring Collar
94	1	Spring Compression
95	1	Variable Shaft ● 95A Stud, 95B Nut
96	1	Square Key
97	1	Pipe Plug (Used on Units with 5GD, 5GR, & 2I GD)
98	1	Ball Bearing (Position #7) (Refer to section 775)
99	1	Pulley End Bracket (Not used on units w/SYNCRGGEAR)
100	2	Hex Head Cap Screws
101	1	Water Deflector (Used on VA CORRO-DUTY & Super Clean Only)
102	1	Base Plate (VAP Only)
103	4	Hex Collar Stud - Plate to Frame Case
104	4	Hex Nut - VA Only - Plate to Frame Case
105	4	Cap Nut (Super Clean Only)
106	1	Adaptor Ring (Use on Units w/SYNCRGGEAR in "Z" Flow Only)
107	4	Hex Head Cap Screw/Washer - Adaptor Ring
108	1	VARIDRIVE Support
109-115	-	Not Used This Assembly
116	1	Cover Plate
117	2	Self Tapping Screws
118	2	Cover Plate Qty. 1 on Units w/SYNCRGGEAR

● Specify type of Varidrive construction; Endolube or V-Key.

### WARNING:

Any disassembly or repair work on explosionproof motors will void the Underwriters' Laboratories, Inc. label unless done by the manufacturer, or a facility approved by the Underwriters' Laboratories, Inc.. Refer to your nearest U.S. Electrical Motors office for assistance.

### PRICES:

Parts stocking distributors: refer to your USEM renewal parts numerical index.

All others: refer to your nearest USEM parts stocking distributor.

