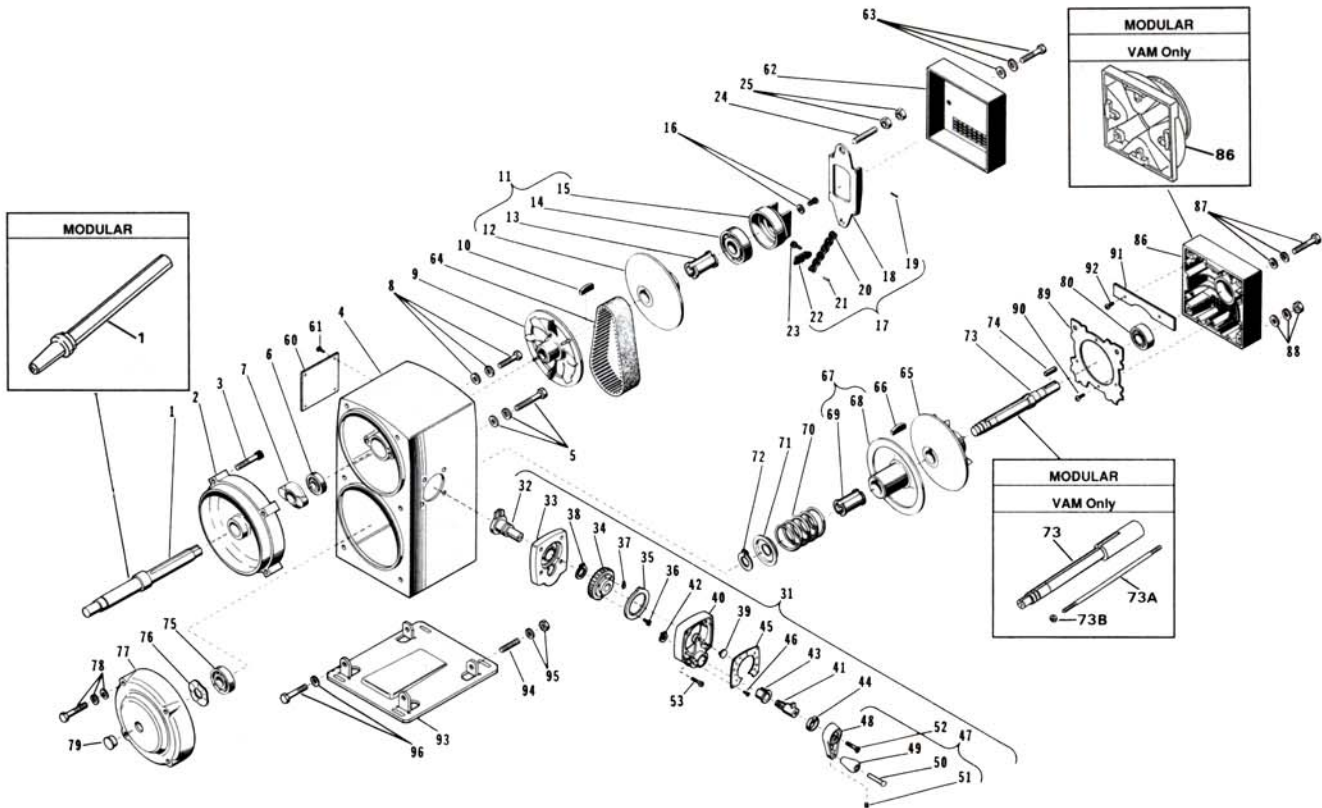


RENEWAL PARTS



PARTS LIST

FRAME 10 — TYPES VA, VAV, VAP, VAM — VARIDRIVE FRAME ASSEMBLY WITH V-KEY



ITEM NO.	QTY.	NAME OF PART
1	1	Motor Shaft or Input Shaft
2	1	Adaptor Bracket (LF Only)
3	4	Socket Head Cap Screw (Adaptor to Stator)(LF Only)
4	1	Frame Case
5	4	Hex Head Cap Screw, Lockwasher, & Plain Washer (Frame to Adaptor or Stator)
6	1	Ball Bearing (Position #10) (Refer to section 775)
7	1	Bearing Cap
8	2	Hex Head Cap Screw, Lockwasher, & Plain Washer (Bearing Cap)
9	1	Stationary Motor VARIDISC
10	1	Bowed Key
11	1	Adjustable Motor VARIDISC Assembly (Includes Items 12 thru 15)
12	1	Adjustable Motor VARIDISC (Sold as Assembly Only)

ITEM NO.	QTY.	NAME OF PART
13	1	Bushing
14	1	Ball Bearing (Position #9) (Refer to section 775)
15	1	Shifting Bearing Housing
16	2	Self-Tapping Screw & Plain Washer
17	1	Control Arm Assembly (Includes Items 18 thru 22)
18	1	Shifting Lever
19	1	Spring Pin (Lever to Chain)
20	1	Roller Chain
21	1	Spring Pin (Chain to Cam)
22	1	Cam
23	2	Socket Head Cap Screw
24	1	Stud
25	2	Hex Jam Nut
26-30		Not Used This Assembly
31	1	Handwheel Assembly (Includes Items 32 thru 52)
32	1	Camshaft
33	1	Adaptor Plate Assembly
34	1	Control Gear



RENEWAL PARTS



PARTS LIST

FRAME 10 — TYPES VA, VAV, VAP, VAM — VARIDRIVE FRAME ASSEMBLY WITH V-KEY

ITEM NO.	QTY.	NAME OF PART
35	1	Speed Stop
36	3	Round Head Machine Screw
37	1	Pointer
38	1	Retaining Snap Ring
39	1	Plastic Plug
40	1	Control Housing Assembly
41	1	Pinion Shaft Assembly
42	1	Retaining Snap Ring
43	1	Bushing (Pinion Shaft)
44	1	Anti-Creep Spring
45	1	Dial Plate
46	4	Self-Tapping Screw
47	1	Handwheel Sub-Assembly (Includes Items 48 thru 51)
48	1	Handwheel
49	1	Handle
50	1	Knob Pin
51	1	Socket Set Screw
52	1	Flat Head Cap Screw (Handwheel)
53	4	Round Head Machine Screw (Control to Frame)
54-59		Not Used This Assembly
60	1	Cover Plate
61	4	Round Head Cap Screw
62	1	Front Plate Cover
63	2	Hex Head Cap Screw, Lockwasher, & Plain Washer
64	1	VARIBELT (Refer to section 732, page 1)
65	1	Stationary Driven VARIDISC
66	1	Bowed Key
67	1	Adjustable Driven VARIDISC Assembly (Includes Items 68 thru 69)

ITEM NO.	QTY.	NAME OF PART
68	1	Adjustable Driven VARIDISC (Sold as Assembly Only)
69	1	Bushing
70	1	Compression Spring
71	1	Spring Collar
72	1	Retaining Snap Ring
73	1	Output Shaft 73A Stud, 73B Nut
74	1	Square Key (Output Shaft)
75	1	Ball Bearing (Position #8) (Refer to section 775)
76	1	Wave Spring Washer
77	1	Support Bracket
78	4	Hex Head Cap Screw, Lockwasher, & Plain Washer
79	1	Bracket Plug
80	1	Ball Bearing (Position #7) (Refer to section 775)
81-85		Not Used This Assembly
86	1	Pulley End Bracket
87	2	Hex Head Cap Screw, Lockwasher, & Plain Washer
88	2	Hex Nut, Lockwasher, & Plain Washer (Bracket to Base)
89	1	Air Deflector
90	4	Self-Tapping Screw
91	1	Special Cover
92	2	Self-Tapping Screw
93	1	Base Plate (VAP Only)
94	2	Stud
95	2	Hex Nut & Lockwasher
96	2	Hex Head Cap Screw & Lockwasher
97	4	Plastic Plug (VARIDRIVE Frame)(Not illus.)
98	2	Plastic Plug (1/8 NPT)(Not illus.)

WARNING:

Any disassembly or repair work on explosionproof motors will void the Underwriters' Laboratories, Inc. label unless done by the manufacturer, or a facility approved by the Underwriters' Laboratories, Inc.. Refer to your nearest U.S. Electrical Motors office for assistance.

PRICES:

Parts stocking distributors: refer to your USEM renewal parts numerical index.
All others: refer to your nearest USEM parts stocking distributor.

